

Dossier technique

FR

EN

ES



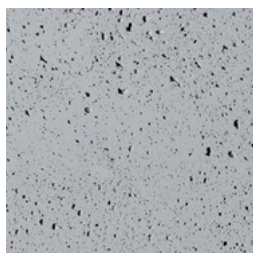
Panbeton® courbe
1/4 de rond standard

CONCRETE LCDA®

Concave et Convexe

Finitions disponibles

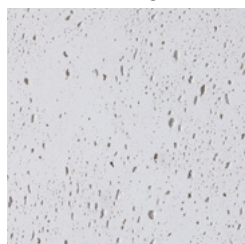
pour ce modèle



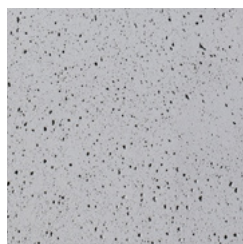
Brut moyen

Coloris disponibles

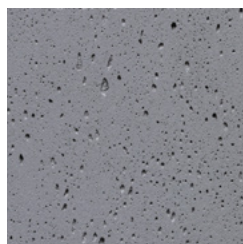
Gamme de gris



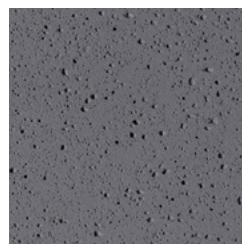
402
Blanc



200
Gris Naturel



217
Gris Moyen

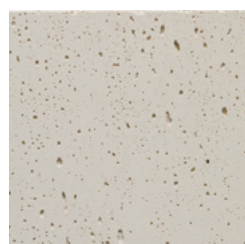


216
Gris Anthracite

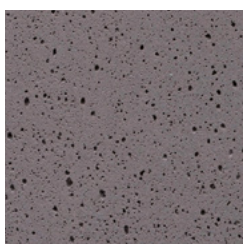


209
Noir

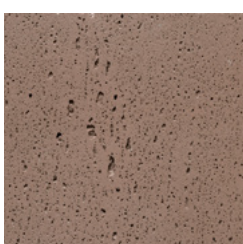
Gamme naturelle



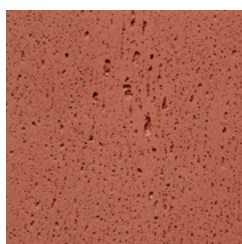
404
Pierre



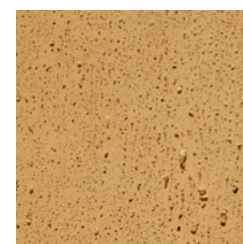
205
Marron



473
Ouarzazate



477
Terracotta



420
Ocre jaune

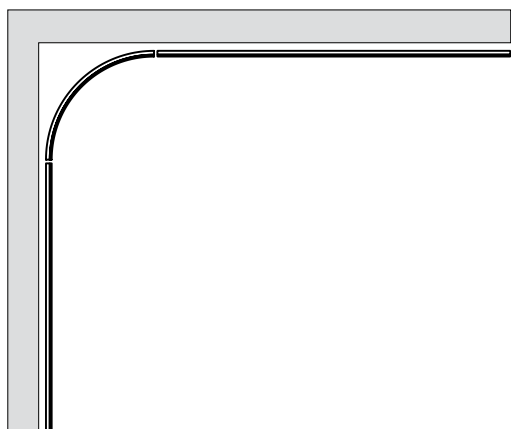
Caractéristiques techniques des modèles

	CONCAVE	CONVEXE
Surface	Béton Fibré	
Rayon (Vue Face - béton)	270 mm	290 mm
Longueur d'arc (Vue Face - béton)	424,1 mm	455,5 mm
Encombrement (hors tout)	2600x403x94 mm	2600x410x96 mm
Epaisseur totale	15mm (0+3mm)	
Support	Panneau de construction en polystyrène extrudé 10mm	
Modèle disponible	Classique	
Finition	Brut Moyen	
Traitement	Fixateur poussière et anti-tâche (Réf. D)	
Poids au m2	12 à 18 kg (+/- 20%)	
Poids du panneau	+/- 15 kg	
Classement au feu	B-s1,d0	

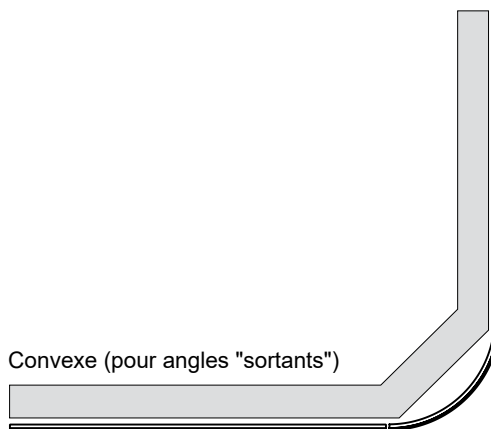
Configurations d'installation - murs & mobiliers

Angles

Concave (pour angles "entrants")

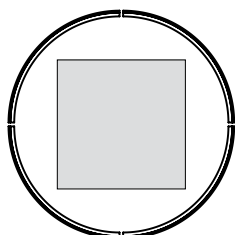


Convexe (pour angles "sortants")

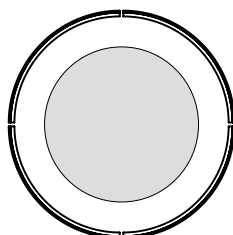


Habillage de piliers

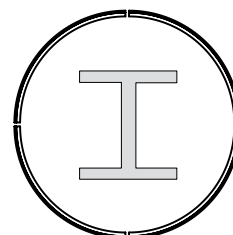
Convexe



Convexe

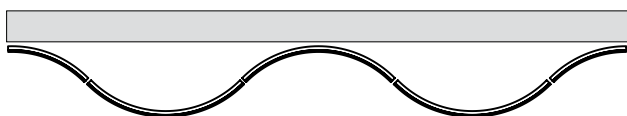


Convexe

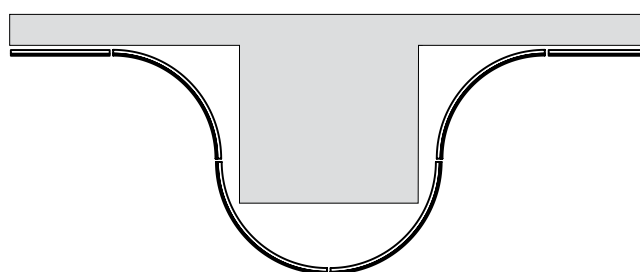


Ondulations verticales

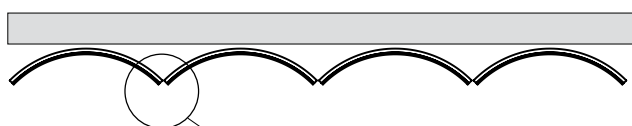
Concave + Convexe



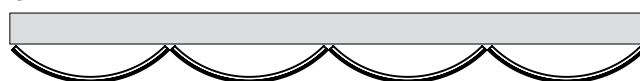
Concave + Convexe



Concave

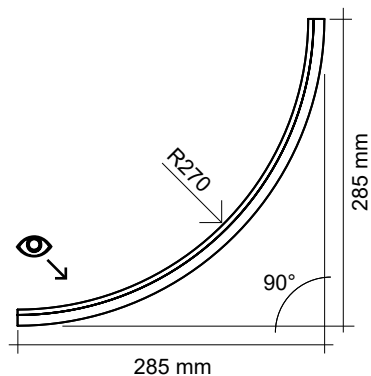


Convexe

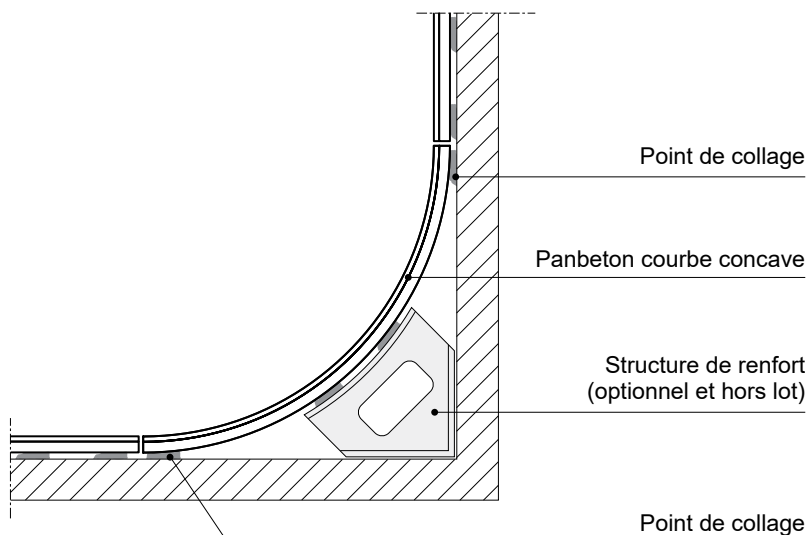


voir fiche "Raccords et traitement des arêtes"

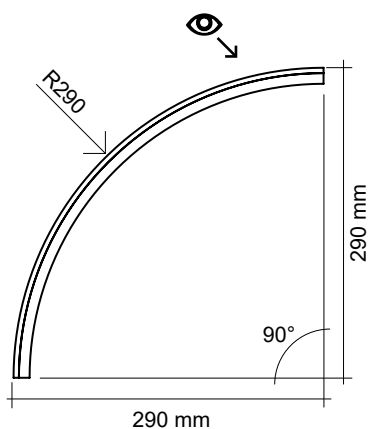
Panbeton courbe - 1/4 de rond CONCAVE



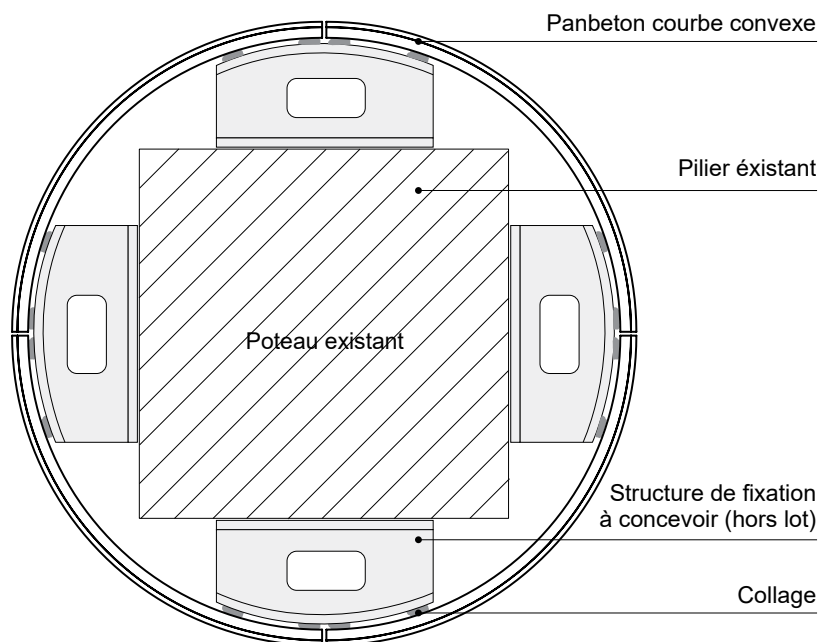
Dimensions en millimètres
Tolérance générale : +/- 3 mm



Panbeton courbe - 1/4 de rond CONVEXE



Dimensions en millimètres
Tolérance générale : +/- 3 mm



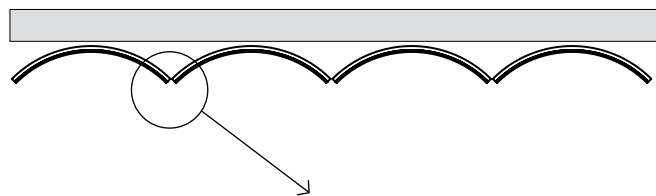
Habillage de piliers existants :

- Pilier carré : section $\leq 360 \times 360$ mm
- Pilier rond : diamètre ≤ 540 mm

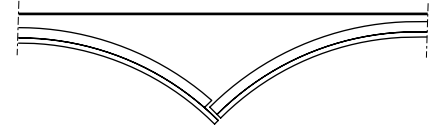
Les structures de fixation sont à fabriquer sur-mesure, en fonction de la dimension des piliers et du type de pose choisi.

Raccords et traitement des arêtes

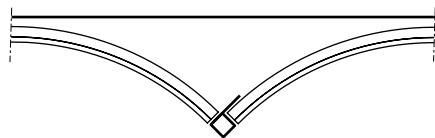
Panbeton courbe - Concave



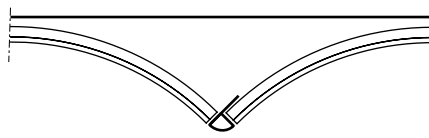
Décaissement du support



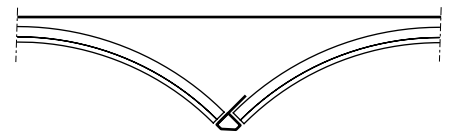
Profil carré



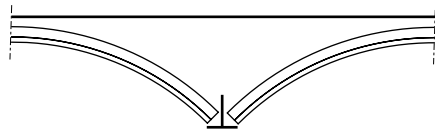
Profil 1/4 de rond



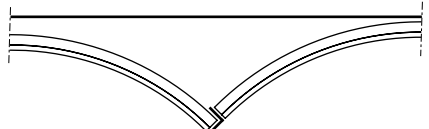
Profil diamant



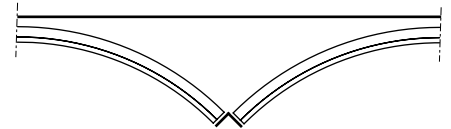
Profil en T



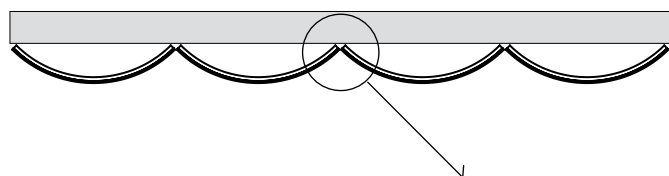
Profil en L



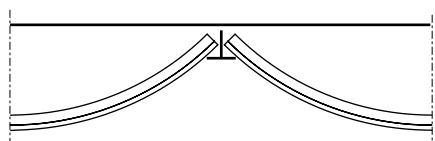
Profil en L



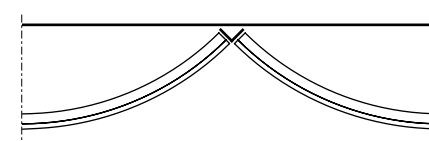
Panbeton courbe - Convexe



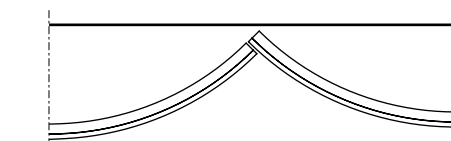
Profil en T



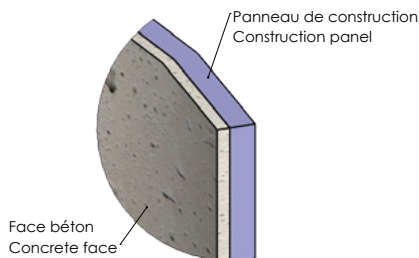
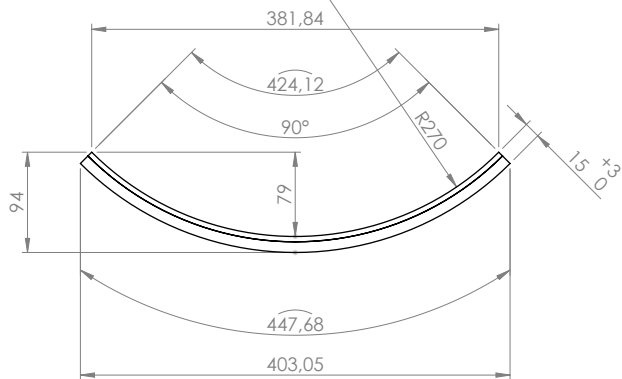
Profil en L



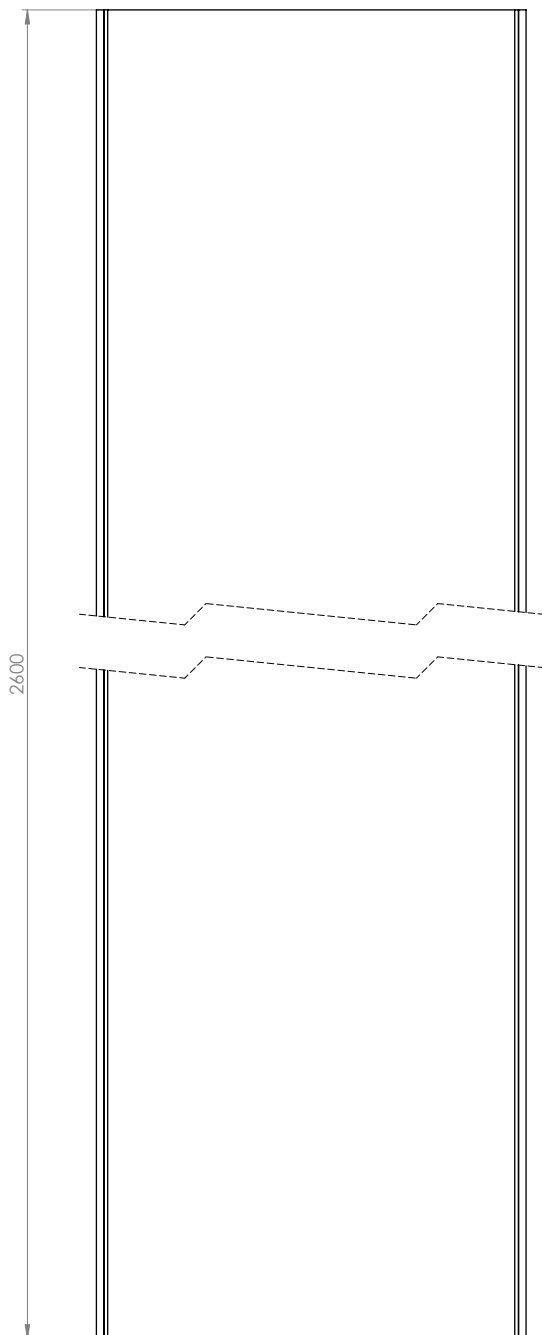
Bord à bord



Panbeton® Concave



DÉTAIL A
DETAIL A
ECHELLE 1 : 2
SCALE 1: 2



INFORMATIONS TECHNIQUES :

Matière : Béton fibré ultra haute performance

Poids : 15 Kg (+/- 20%)

Tolérance générale +/- 3 mm

TECHNICAL INFORMATION :

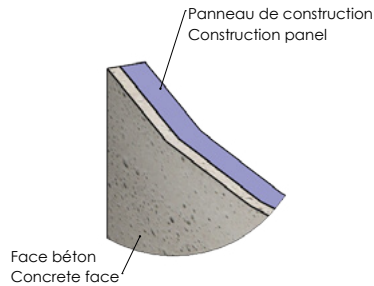
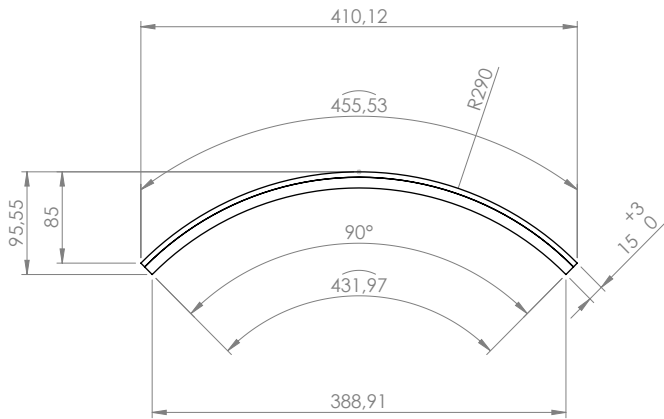
Material : Fiber High performance concrete

Weight : 15 kg (+/- 20%)

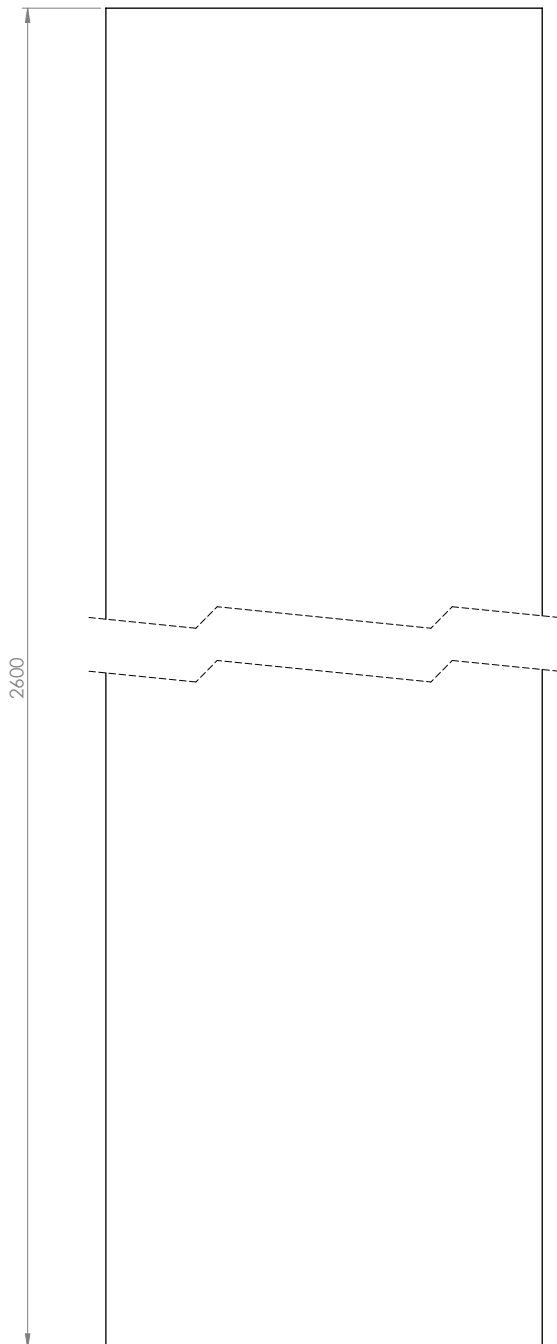
General tolerance : +/- 3 mm

CONCRETE LCDA			8 rue Copernic 49240 Avrillé www.concrete-beton.com	
			Echelle : Scale :	Ep :
Date	Nom Name	N°plan	-PANBETON® COURBE CONCAVE R270mm - CLASSIQUE 2600 x 424 x 15mm -PANBETON® CONCAVE CURVE R270mm - CLASSIC 2600 x 424 x 15mm STUDIO LCDA	
Surface : m²			Bon pour accord :	
Unités : mm			Agreement for production :	
Unités : mm			FEUILLE 1 SUR 1	
Poids : Kg			SHEET 1 OF 1	
Weight : kg				

Panbeton® Convexe



DÉTAIL B
DETAIL B
ECHELLE 1 : 2
SCALE 1 : 2



INFORMATIONS TECHNIQUES :

Matière : Béton fibré ultra haute performance

Poids : 15 Kg (+/- 20%)

Tolérance générale +/- 3 mm

TECHNICAL INFORMATIONS :

Material : Fiber High performance concrete

Weight : 15 kg (+/- 20%)

General tolerance : +/- 3 mm

CONCRETE LCDA			8 rue Copernic 49240 Avrillé www.concrete-beton.com
Date		Nom	N°plan
Surface : m²		Echelle : Scale :	
Unités : mm		Ep :	
Units : mm			
Poids : Kg		-PANBETON® COURBE CONVEXE R290mm - CLASSIQUE 2600 x 455 x 15mm	
Weight : kg		-PANBETON® CONVEX CURVE R290mm - CLASSIC 2600 x 455 x 15mm	
		STUDIO LCDA	
		Bon pour accord :	
		Agreement for production :	
		FEUILLE 1 SUR 1	
		SHEET 1 OF 1	

Contacts

SIÈGE SOCIAL

8 rue Copernic
49240 Avrillé FRANCE

GB

WeWork
1 Mark Square
Shoreditch
London EC2A 4EG

ES

Calle Capitán Haya, 38-4º
28020 Madrid

HK

20/F Chungnam building,
1 Lockhart road, Wan Chai,
HONG KONG

US - CÔTE EST

The Yard
-106 W 32nd street Suite 146
New York, NY 10001

US - CÔTE OUEST

Seattle, WA 98101

+33 (0)2 41 33 99 10
contact@concretelcda.com



www.concretelcda.com

Toutes les informations contenues dans cette brochure sont susceptibles d'être modifiées. Tous les droits sont réservés. La reproduction totale ou partielle du contenu de cette brochure est interdite sans notre accord écrit.

MAI 2024

©CONCRETE LCDA®

www.concretelcda.com

Concrete LCDA - 8 rue Copernic 49240 Avrillé - FRANCE - T. +33 (0) 2 41 33 99 10 - contact@concretelcda.com