

# Technical sheet

FR

EN

ES



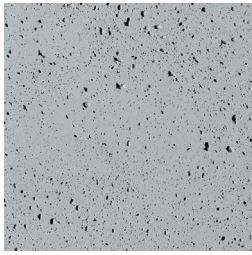
Concave and Convex

Panbeton® curved  
standard 1/4 round

CONCRETE LCDA®

## Available finishes

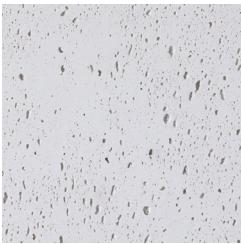
for this reference



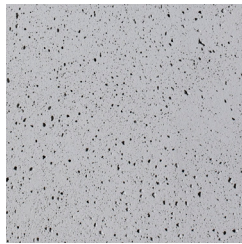
Medium Pitted

## Available finishes

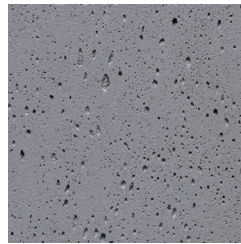
Grey range



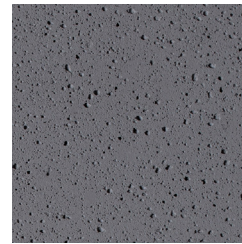
402  
White



200  
Natural Grey



217  
Slate Grey

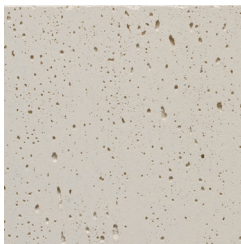


216  
Anthracite

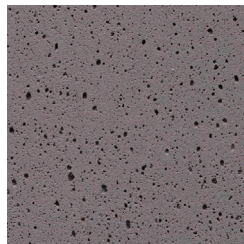


209  
Black

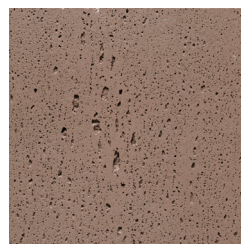
Natural range



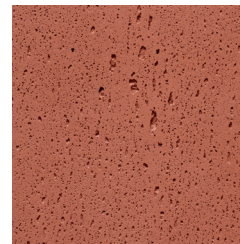
404  
Stone



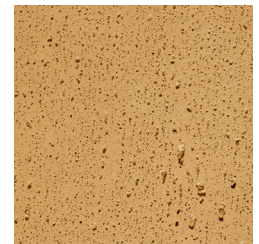
205  
Brown



473  
Ouarzazate



477  
Terracotta



420  
Yellow Ochre

## Technical specifications of models

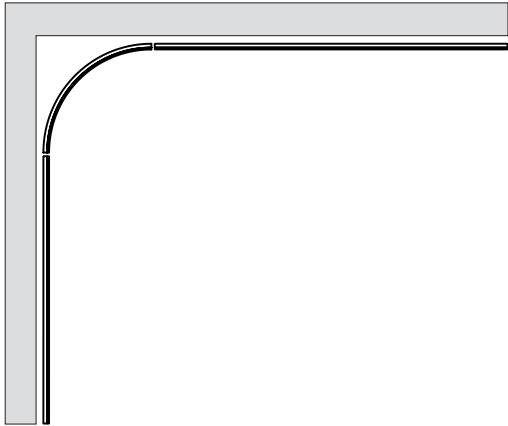
	CONCAVE	CONVEXE
Surface	Fibre-reinforced concrete	
Radius (Front view- concrete)	270 mm	290 mm
Arc length (Front view- concrete)	424,1 mm	455,5 mm
Dimensions (overall)	2600x403x94 mm	2600x410x96 mm
Thickness	15mm (0+3mm)	
Support	Construction panel in extruded polystyrene 10mm	
Available model	Classic	
Finition	Medium Pitted	
Sealer treatment	Dust and stain protection (Réf. D)	
Weight per sqm	12 à 18 kg (+/- 20%)	
Panel weight	+/- 15 kg	
Fire classification	B-s1,d0	

# Installation configurations - walls & furniture

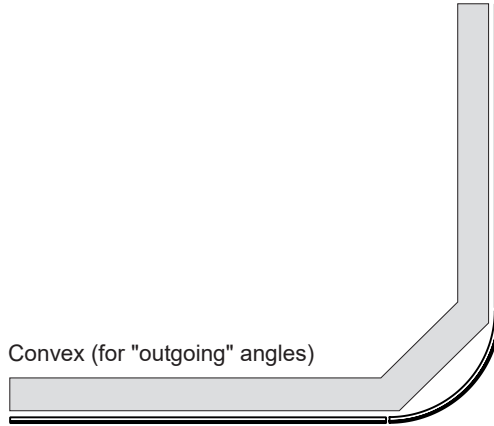
## Corners

---

Concave (for "incoming" angles)



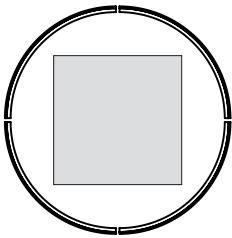
Convex (for "outgoing" angles)



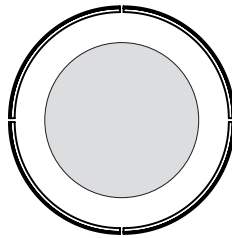
## Pillar cladding

---

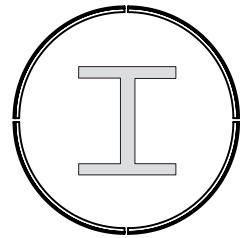
Convex



Convex



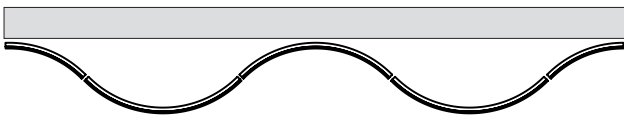
Convex



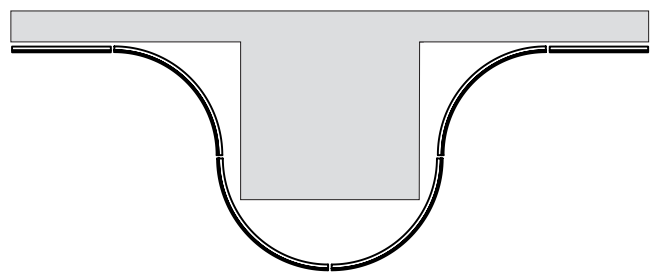
## Vertical ripples

---

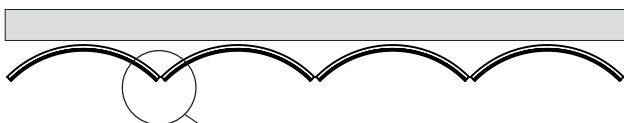
Concave + Convex



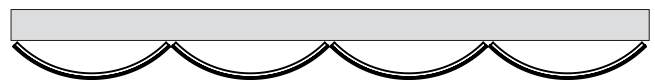
Concave + Convex



Concave



Convex

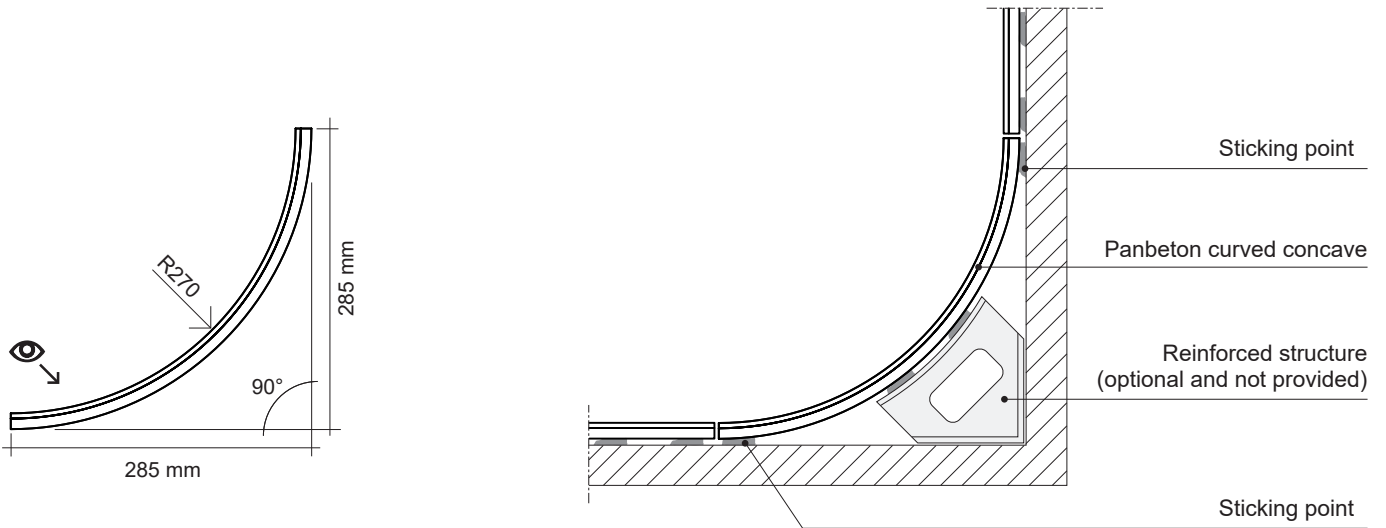


see "Fittings and edge treatment" data sheet



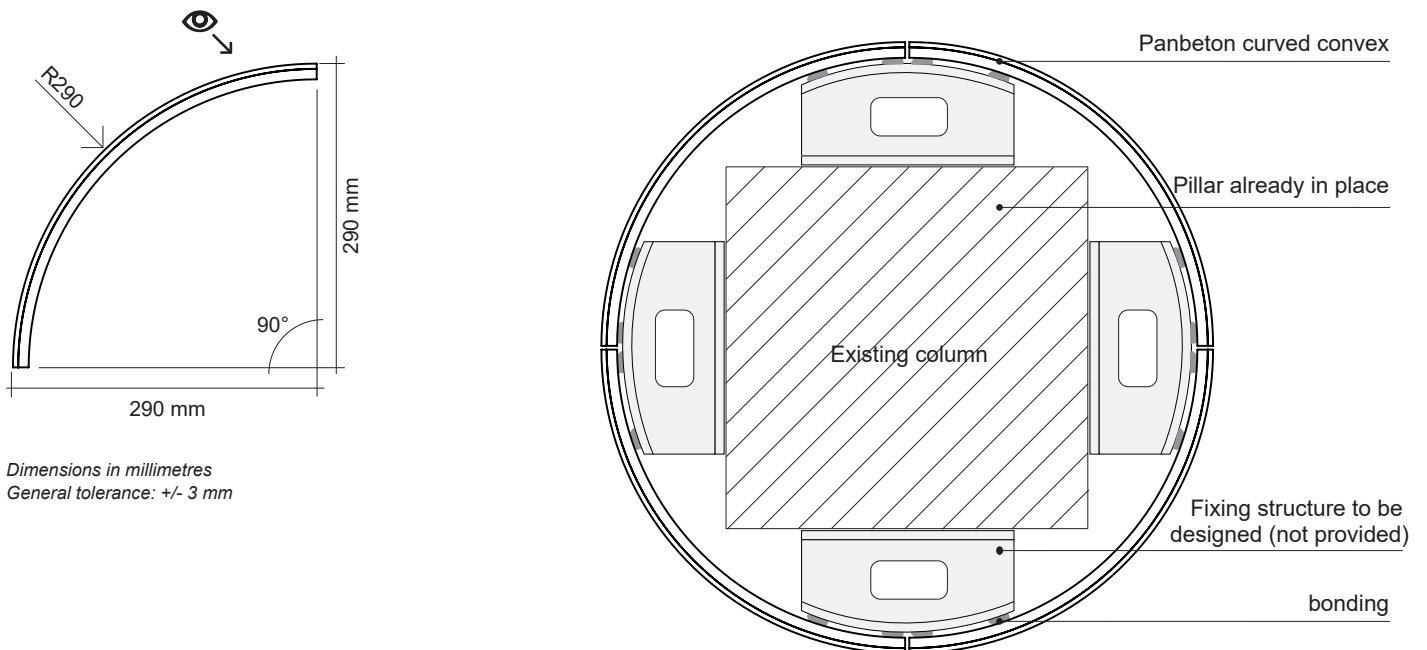
# Installation

## Panbeton curved - 1/4 round CONCAVE



Dimensions in millimetres  
General tolerance: +/- 3 mm

## Panbeton curved - 1/4 round CONVEXE



Dimensions in millimetres  
General tolerance: +/- 3 mm

Cladding existing pillars :

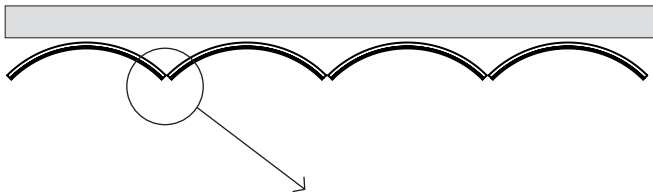
- Square pillar : section  $\leq 360 \times 360$  mm
- Round pillar : diameter  $\leq 540$  mm

The fixing structures are made to measure, depending on the size of the pillars and the type of installation chosen.

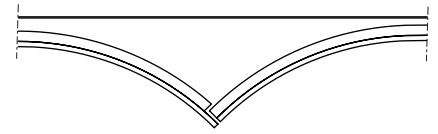
# Fittings and edge treatment

## Panbeton curved - Concave

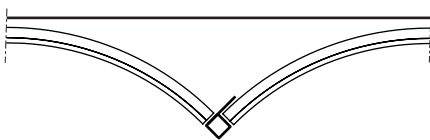
---



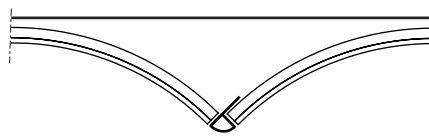
Substrate excavation



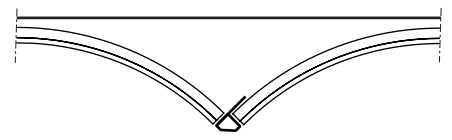
Square profile



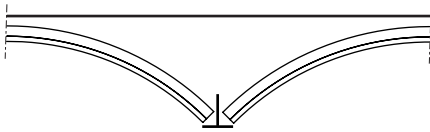
1/4 round profile



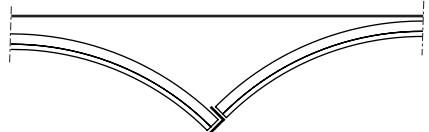
Diamond profile



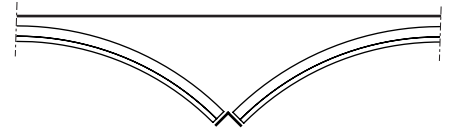
T-profile



L-profile

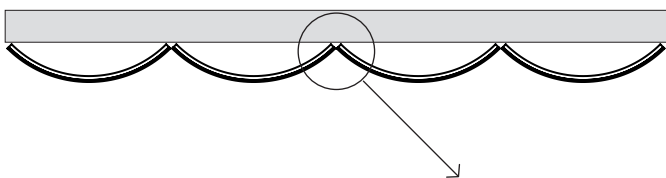


L-profile

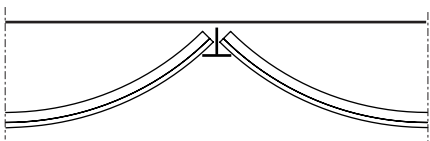


## Panbeton curved - Convex

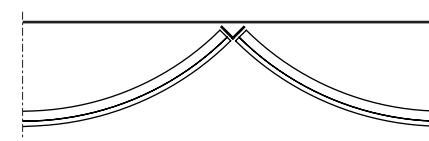
---



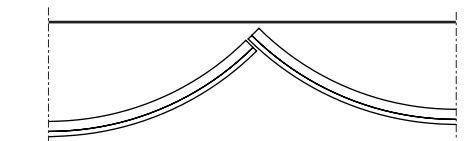
Profil en T



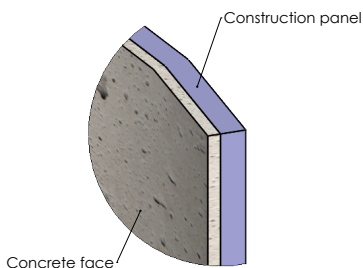
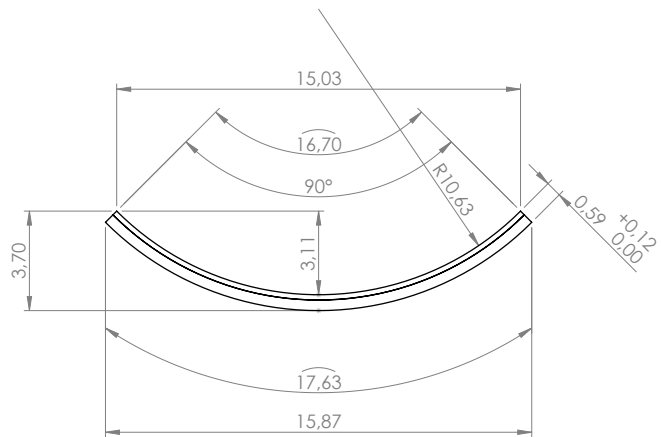
Profil en L



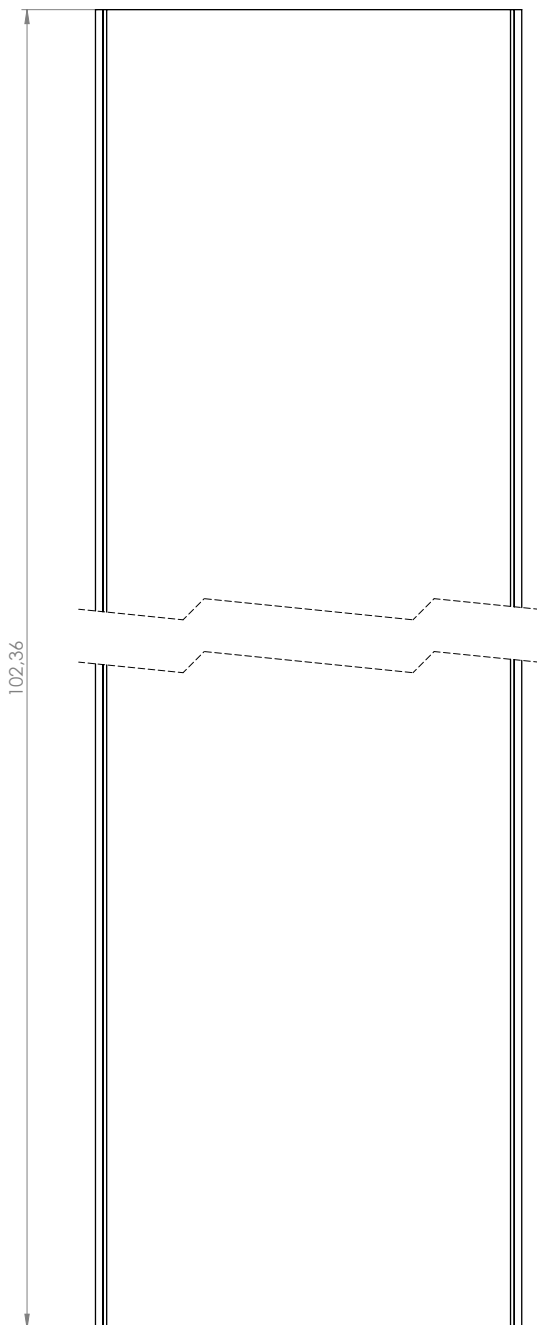
Edge-to-edge



**Panbeton® Concave**



A  
SCALE 1: 2



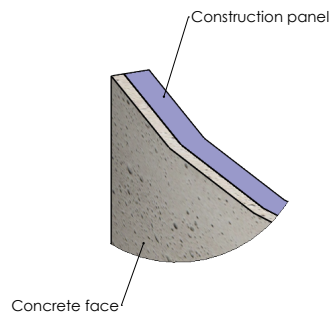
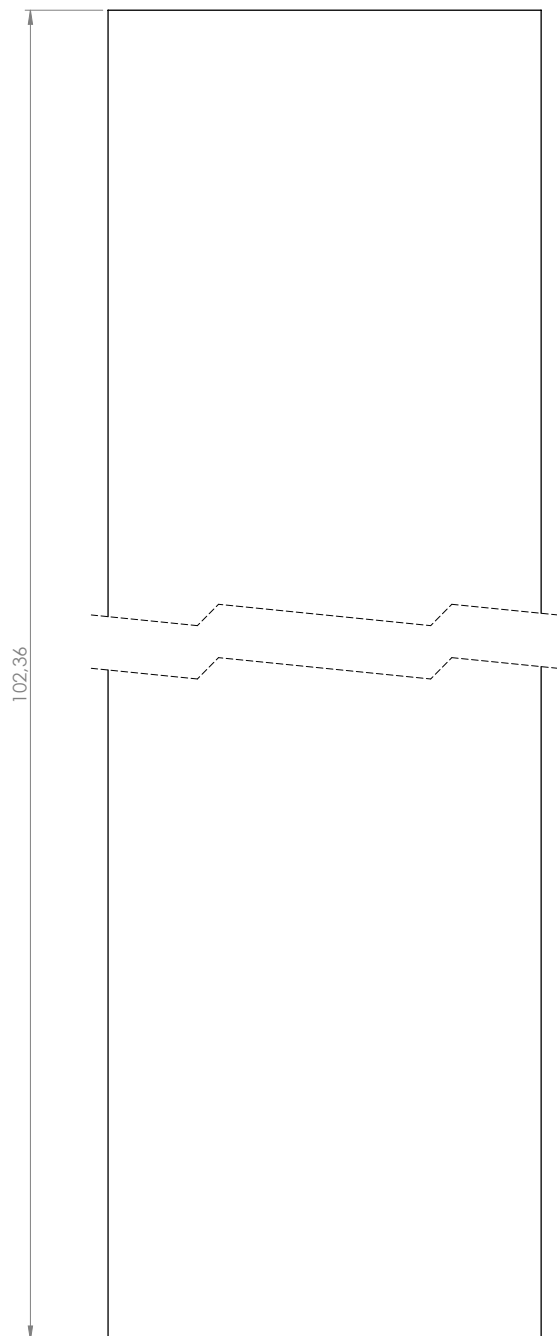
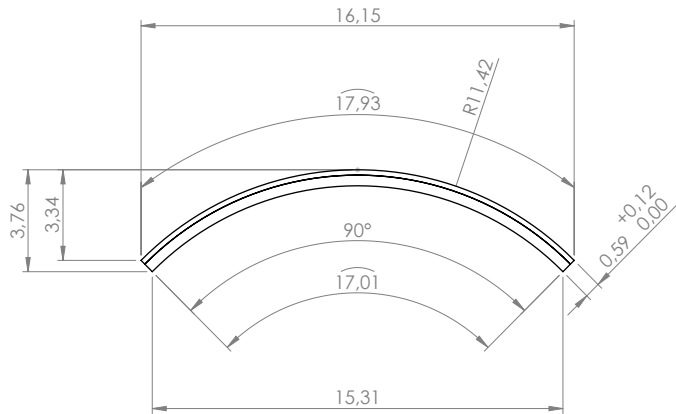
**TECHNICAL INFORMATIONS :**

Material : Fiber High performance concrete  
 Weight : 33 LBS (+/- 20%)-(15 kg (+/- 20%))  
 General tolerance : 0.12 in (+/- 3 mm)

<b>CONCRETE LCDA</b>			8 rue Copernic 49240 Avrillé www.concretelcda.com	
			Scale : 1:5	A3
Date	Name	N°plan	PANBETON® CONCAVE CURVE R 10.6 in (R270mm) CLASSIC 102.36 x 16.69 x 0.59 in (2600 x 424 x 15mm) <b>STUDIO LCDA</b>	
Surface : m² Units : in Weight : LBS			<b>Agreement for production :</b>	
			SHEET 1 OF 1	

**CONCRETE LCDA®**

**Panbeton® Convexe**



B  
SCALE 1: 2



**TECHNICAL INFORMATIONS :**

Material : Fiber High performance concrete

Weight : 33 LBS (+/- 20%)-(15 kg (+/- 20%))

General tolerance : 0.12 in (+/- 3 mm)

<b>CONCRETE LCDA</b>			8 rue Copernic 49240 Avrillé www.concretelcda.com	
			Scale : 1:5	A3
Date	Name	N°plan	<b>PANBETON® CONVEXE CURVE 11.41 in (R290mm)</b> <b>CLASSIC 102.36 x 17.91 x 0.59in (2600 x 455 x 15mm)</b> <b>STUDIO LCDA</b>	
Surface : m² Units : in Weight : LBS			<b>Agreement for production :</b>	
			SHEET 1 OF 1	

# Contacts

## HEADOFFICE

8 rue Copernic  
49240 Avrillé FRANCE

## UK

WeWork  
1 Mark Square  
Shoreditch  
London EC2A 4EG

## Spain

Calle Capitán Haya, 38-4º  
28020 Madrid

## ASIA

20/F Chungnam building,  
1 Lockhart road, Wan Chai,  
HONG KONG

## USA - EST COAST

The Yard  
-106 W 32nd street Suite 146  
New York, NY 10001

## USA - WEST COAST

Seattle, WA 98101

+33 (0)2 41 33 99 10  
contact@concretelcda.com



[www.concretelcda.com](http://www.concretelcda.com)

All information contained in this document is subject to change. All rights reserved. No part of this brochure may be reproduced without our written permission..

JUIN 2024

©CONCRETE LCDA®