



PANBETON[®]
COLLECTION

CONCRETE LCDA[®]

PANBETON®
GRAPHITE



NEW COLLECTION 2021-2022



PANBETON®
GRAPHITE

DESIGN : JEAN-PHILIPPE NUEL
2600 X 900 MM | 102.36" X 35.43"

PANBETON® GRAPHITE

by Jean-Philippe Nuel



Studio Jean-Philippe Nuel has created a new model of ultra-lightweight, high-performance fibre-reinforced concrete panels for Concrete LCDA, called “Graphite”.

Continuing along the same lines as the Chevrons and Timber panels – the one derived from the imprint of Haussmann wood flooring, and the other influenced by wooden formwork slats – Graphite retains a woody touch, as it draws its inspiration from the graphic designs created by different species of wood as they burn. Because depending on whether you burn Douglas fir, Accoya, oak or pine, the surface of the wood will take on a cracked, flaky texture, long grooves or smooth, tight curves.

In architecture, charred wood is traditionally used in exterior cladding, as it provides natural protection to the wood. This Japanese technique is known as “shou sugi ban”. It involves charring the surface of a board, deep down, until a superficial layer of charcoal forms, which will protect the material from the effects of weather.

“The Graphite panels do more than just use charred wood: they feature a graphic composition which plays with the textures of the different finishes, almost like inlays. This way, the panels take a contemporary, creative approach to reinterpreting a secular tradition.”

The result of this assembly is a concrete panel with a flowing geometric design which can be extended length-wise and height-wise like wallpaper. This cladding will add character and a strong identity to any room.



PANBETON®
GÈN 田



NEW COLLECTION 2021-2022



PANBETON[®]
GÈN 

DESIGN : NERI & HU

2600 X 900 MM | 102.36" X 35.43"

PANBETON® GÈN 亘

by Neri & Hu



The Chinese character 亘 “gèn” is composed of two lines at the top and bottom, with the character for “sun” nestled in between. The horizontal strokes, one representing the heavens above and the other representing the earth below, allude to the infinite extension of the horizon, embodying the notion of a spatial and temporal continuity. The design for the panel is composed by a series of well-proportioned raised lines that could appear to extend infinitely across a surface, drawing a direct connection between landscape and dwelling, ground and sky.



PANBETON®
LINES



NEW COLLECTION 2021-2022



PANBETON® LINES

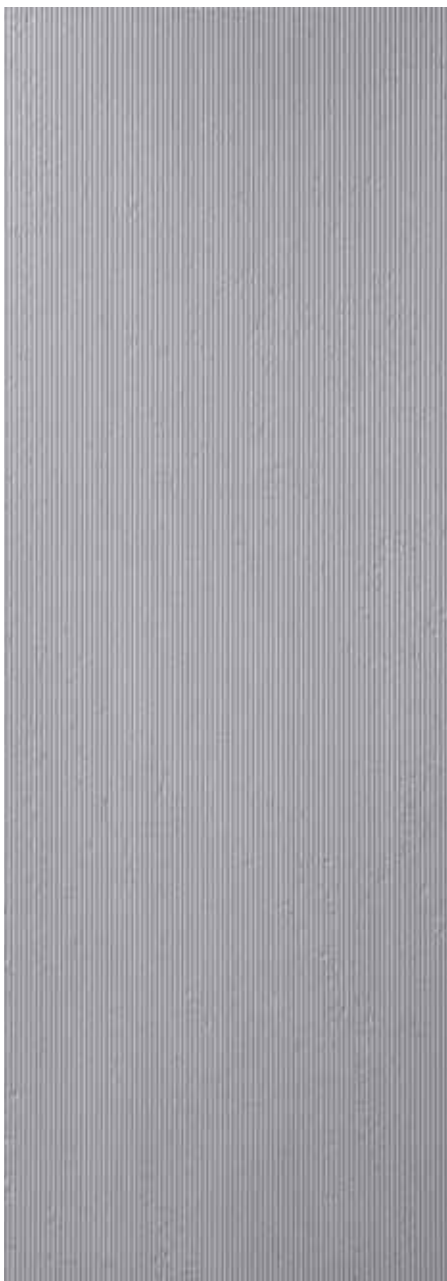
DESIGN : STUDIO LCDA

2600 X 900 MM | 102.36" X 35.43"

PANBETON®
STRIATION



NEW COLLECTION 2021-2022



PANBETON® STRIATION

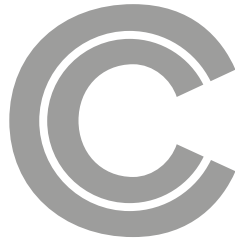
DESIGN : STUDIO LCDA

2600 X 900 MM | 102.36" X 35.43"



PANBETON® LINES, STRIATION & RUGGED

By Studio LCDA

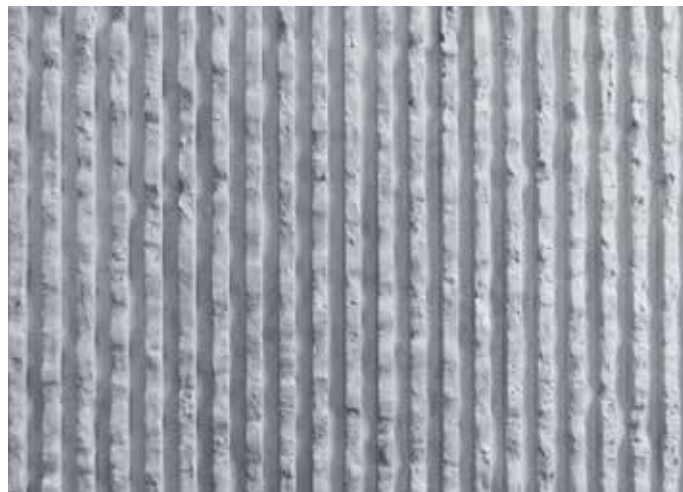


The Brutalism Collection is adding three new models by Studio LCDA: Panbeton® Striation, Lines and Rugged.

As a new tribute to the Brutalist architectural style, this collection refers to the concrete used in buildings, to the raw material which reveals the traces and texture inherent to its installation.

Studio LCDA utilizes a language based on simple geometric shapes, repetitive modules and linear forms. *“We wanted to let the concrete express its fundamental nature and its streamlined and pulled-out variations, making it possible to fully appreciate its minerality and its imperfections.”*

Striation, Lines and Rugged enhance the elegance of architectural lines combined with the strength of concrete, suggesting harmony and continuity between the building’s exterior frame and interior design.



PANBETON®
RUGGED

DESIGN : STUDIO LCDA

2600 x 900 MM | 102.36” x 35.43”

NEW



STRIATION
Studio LCDA



NEW



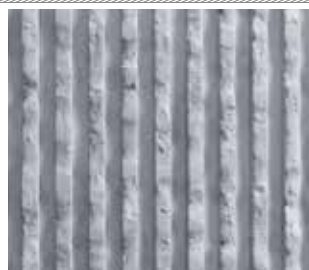
LINES
Studio LCDA



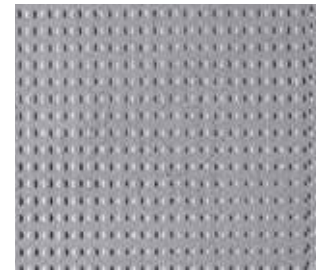
NEW



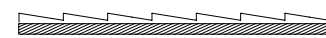
RUGGED
Studio LCDA



BOUCHARDÉ
Patrick Norguet



FACTORY
Victoria Wilmotte





PEIGNÉ
COMBED
Rodolphe Parente



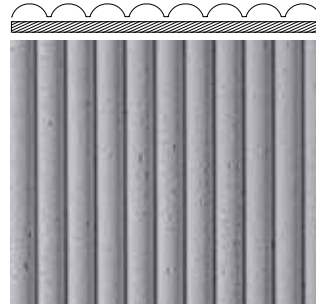
SHAN 山
Neri&Hu



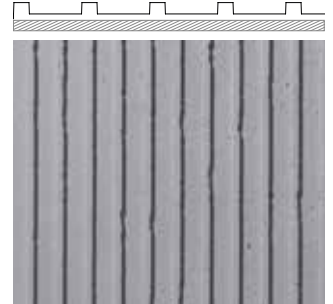
SHUI 水
Neri&Hu



YUN 云
Neri&Hu



GÈN 厓
Neri&Hu



NEW



CLASSIQUE
CLASSIC
Studio LCDA



BANCHÉ 2 MM
SCAFFOLDED 2 MM
Matali Crasset



BANCHÉ 15 MM
SCAFFOLDED 15 MM
Matali Crasset



RUSTY
Studio LCDA



BARBICAN
Terence Woodgate





ORIGIN

Studio LCDA



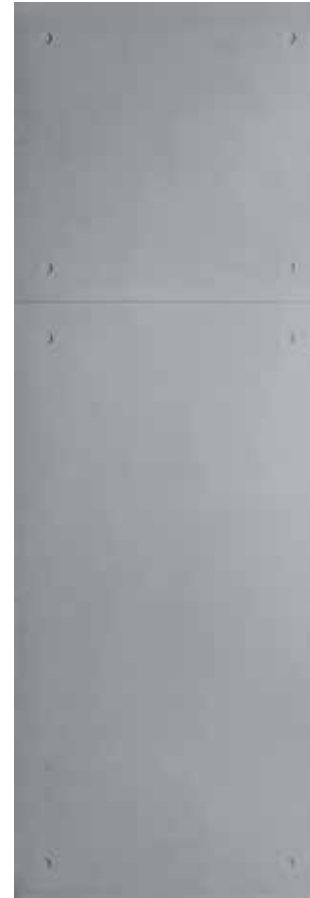
TRIO 15 MM

Studio LCDA



TRIO 2 MM

Studio LCDA



TOTEM

Studio LCDA



RIVET

Studio LCDA





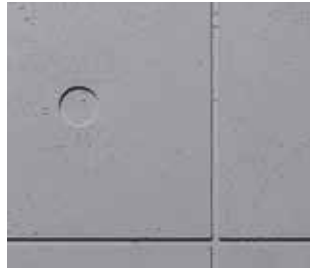
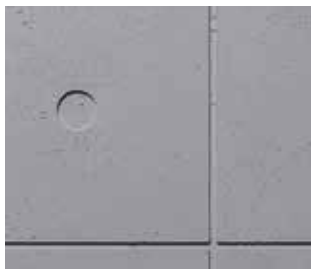
CROSS

Studio LCDA



DOMINO

Studio LCDA





BOIS VERTICAL
SHUTTERED VERTICAL WOOD
Matali Crasset



BOIS HORIZONTAL
SHUTTERED HORIZONTAL WOOD
Matali Crasset



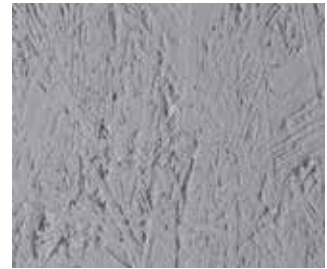
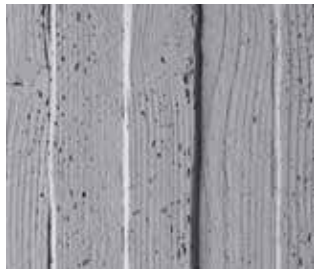
LAMES BOIS VERTICALES
VERTICAL PLANKS
Studio LCDA



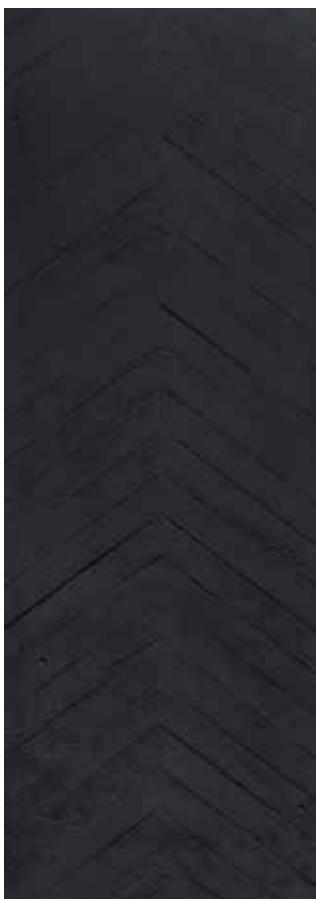
TIMBER
Jean-Philippe Nuel



OSB
Terence Woodgate



NEW



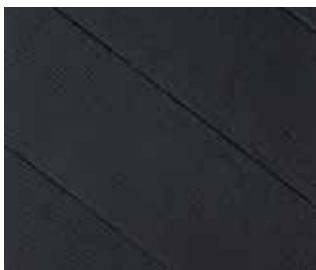
CHEVRONS

Jean-Philippe Nuel



GRAPHITE

Jean-Philippe Nuel





FRAGMENTATION

Matali Crasset



MODERN

Ich & Kar



SLATS

Jean-Marie Massaud



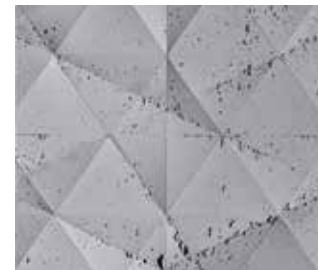
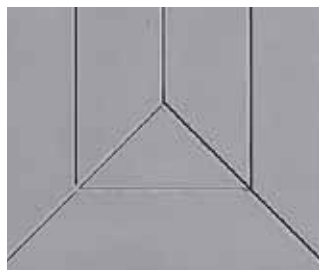
GIOMETRY

Ora Ito



DELICATE

Normal Studio





FOUETTÉ
WHIPPED
Rodolphe Parente



MODELÉ
FINGERPRINT
Rodolphe Parente



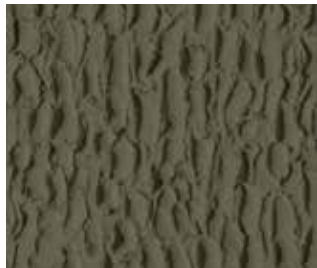
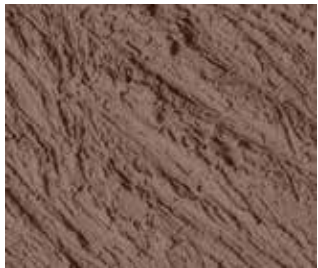
MICA
Sebastian Herkner



MADE IN HAUSSMANN
Matali Crasset



HAUSSMANN MINIMAL
Matali Crasset





GRAND CAPITON

Studio LCDA



HARMONY

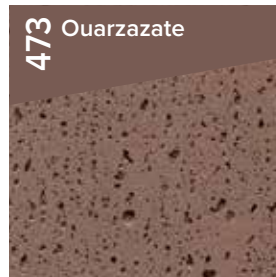
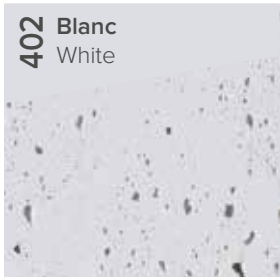
Patrick Norguet



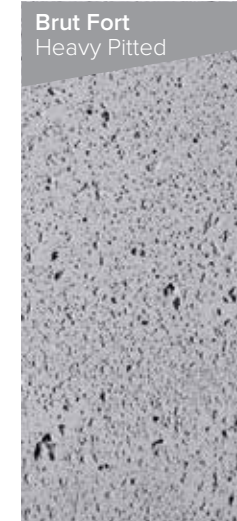
CHOOSE YOUR FINISHES

Choose a color and a pitting (or develop your own color)

COLOR*



FINISHES*



OPTIONS

→ Aged concrete finish

→ Bespoke cut available

→ AA2-s1d0 fire classification

(with specific support : gypsum fiber board)



*Depending on design. Please contact us.

CHOOSE YOUR SEALER TREATMENT

SEALER TREATMENT - TECHNICAL INFORMATION

PANBETON® SLIMBETON® BETON LEGE®

APPLIED AT OUR FACTORY BY OUR DEDICATED TEAM

	APPLICATION	STAIN RESISTANCE	DUST PROTECTION	FINISH	RECOMMENDED FOR	MAINTENANCE
SEALER D <i>Dust + Stain protection</i>	<input checked="" type="checkbox"/> PANBETON® <input checked="" type="checkbox"/> SLIMBETON® <input checked="" type="checkbox"/> BETON LEGE®	★ ★ ☆ ☆ ☆		Mat	Walls and ceilings with high stain risk	Cleaning with a damp microfiber cloth and a neutral cleaning product (non-corrosive) type black soap
SEALER S <i>Reinforced protection sealer</i>	<input checked="" type="checkbox"/> PANBETON® <input checked="" type="checkbox"/> SLIMBETON® <input checked="" type="checkbox"/> BETON LEGE®	★ ★ ★ ☆ ☆		Satin	High traffic areas, Liquid splashing risk	

CONCRETE LCDA®

WWW.CONCRETE-BETON.COM



8 rue Copernic - 49240 Avrillé - FRANCE

contact@concrete-beton.com

T +33 2 41 33 99 10

F +33 9 70 32 65 61

OberSurfaces®

Une société d'Ober Surfaces

www.ober-surfaces.com