

Metal d'Oberflex

**Surfaces décoratives
& Panneaux acoustiques**
Decorative surfaces
& Acoustic panels

 **Oberflex®**

Les textures

The patterns



Skin



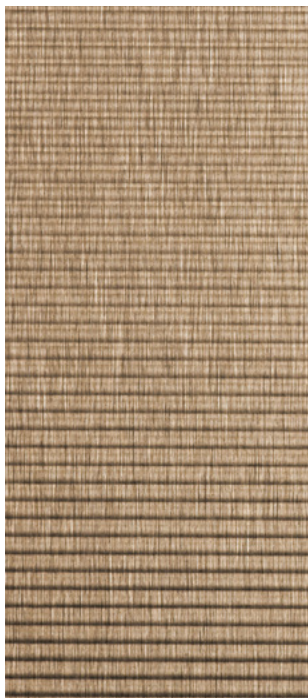
Dots



Net



Lines



Ribbed



Tabs



Sticks



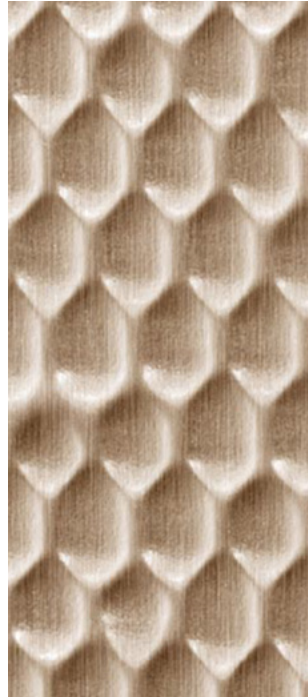
Stripes

Les textures

The patterns



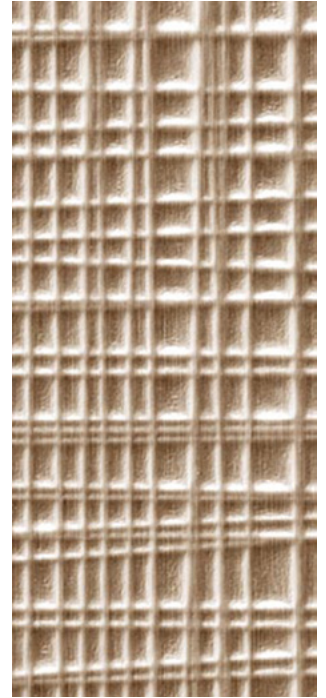
Skarp



Drapa



Hammered



Fibra



Sawn



Clawed



Sablé



Till

L'Offre

The offer

| | Métal brossé Metal brushed | Métal mill finish Metal mill finish | Métal brillant Metal glossy | Métal mat Metal matte |
|---|---|--|---|--|
| 16 Textures 16 Textures | Natural brushed 4041 Brass brushed 4042 Bronze brushed 4045 | Gun metal mill finish 721 Copper mill finish 722 Tin mill finish 723 Black mill finish 724 Tea mill finish 725 | Natural glossy 4070 Brass-tinted glossy 4071 | Umбра matte Sahara matte Stainless steel matte Bronze matte |
| | Inox brushed 4049 Champagne brushed 4051 | | Gun metal glossy 726 | Natural matte 4240 |
| Clawed | ● | ● | - | - |
| Dots | ● | ● | - | ● |
| Drapa | ● | ● | - | - |
| Fibra | ● | ● | - | - |
| Hammered | ● | ● | - | - |
| Lines | ● | ● | - | ● |
| Net | ● | ● | - | ● |
| Ribbed | ● | - | - | ● |
| Sablé | ● | ● | - | - |
| Sawn | ● | ● | - | - |
| Skarp | ● | ● | - | - |
| Skin (surface lisse) Skin (smooth surface) | ● | ● | ● | - |
| Skin SR (surface lisse) Skin SR (smooth surface) | ○ ⁽¹⁾ | - | - | ● ⁽²⁾ |
| Sticks | ● | ● | - | ● |
| Stripes | ● | ● | - | ● |
| Tags | ● | ● | - | ● |
| Till | ● | ● | - | - |

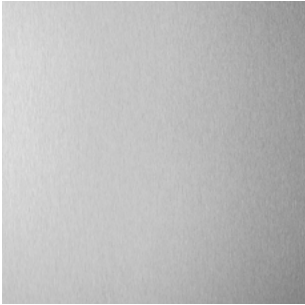
1 Sur demande : résistance de surface renforcée 2N (Newton) pour Natural brushed 4041 et Bronze brushed 4045.
On request : reinforced surface resistance 2N (Newton) for Natural brushed 4041 and Bronze brushed 4045 references.

2 Résistance de surface renforcée 3N (Newton)
Reinforced surface resistance 3N (Newton)

Métal brossé

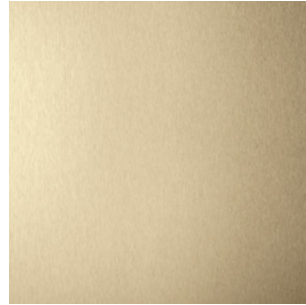
Metal brushed

(1) Également disponible en version
SR Scratch Résistant 2N (Newton)
(1) Also available in SR Scratch Resistant 2N
(Newton)

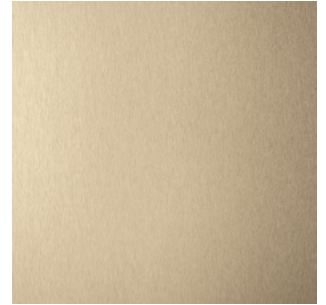


Natural brushed 4041

(1)



Brass brushed 4042



Bronze brushed 4045

(1)



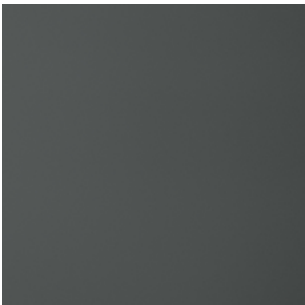
Inox brushed 4049



Champagne brushed 4051

Métal mill finish

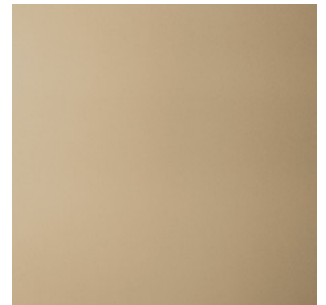
Metal mill finish



Gun metal mill finish 721



Black mill finish 724



Copper mill finish 722



Tin mill finish 723



Tea mill finish 725

Métal brillant

Metal glossy

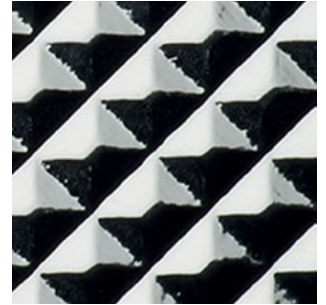
(2) Disponible pour tous les motifs sauf Skin
(2) Available for all the patterns except Skin



Natural glossy 4070



Brass-tinted glossy 4071



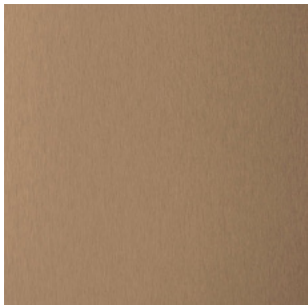
Gun metal glossy 726

(2)

Métal mat

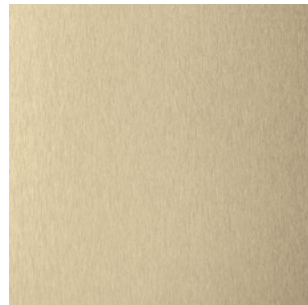
Metal matte

(SR) Finition Scratch Résistant 3N (Newton)
(SR) Scratch resistant finish 3N (Newton)



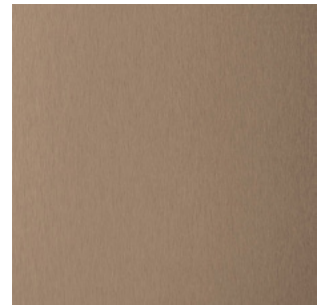
Sunset matte 4062

(SR)



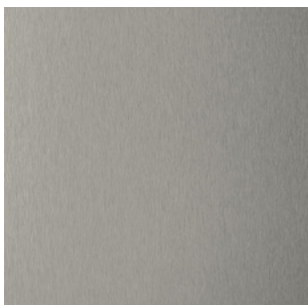
Urban matte 4063

(SR)



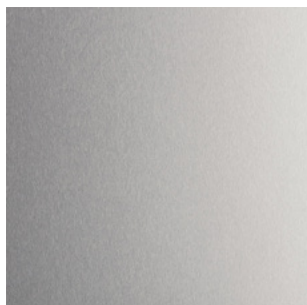
Earth matte 4064

(SR)

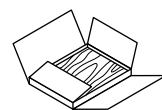


Midnight matte 4061

(SR)



Natural matte 4240



Commande d'échantillons express :
Express samples order :

www.oberflex.com

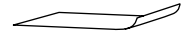


Lines Tea mill finish 725



Caractéristiques techniques

Technical characteristics



Feuilles à reposer
Ready-to-bond laminates

Feuille d'aluminium sur support stratifié
Aluminium foil laminated

Classement au feu / Fire ratings

Standard / Standard: **M1**
Sur demande / On demand:
Euroclass Bs1do, IMO

Épaisseurs / Thicknesses

0,9 mm

Sauf références Mill finish ou Glossy 726 :
Except Mill finish or Glossy 726 references:
1,1 mm

Rayon de cintrage / Bending radius

120 mm

Sauf références Mill finish ou Glossy 726 :
Except Mill finish or Glossy 726 references:
300 mm

Également disponibles / Also available



Panneaux replaqué standard et sur-mesure
Ready-for-use standard
and customized panels



Panneaux acoustiques standard et sur-mesure ⁽¹⁾
Standard and customized
acoustic panels ⁽¹⁾



Plafonds suspendus Tectonique 5-5 ⁽¹⁾
Suspended ceilings
Tectonique 5-5 ⁽¹⁾

⁽¹⁾ Motif Skin uniquement, détails sur demande

⁽¹⁾ Skin pattern only, details on request

Les domaines d'utilisations

Applications



Murs
Walls



Portes
Doors



Plafonds
Ceilings



Ameublement
Furniture

Disponibilités et dimensions standard

Availabilities and standard dimensions

| | Métal brossé Metal brushed | Métal mill finish Metal mill finish | Métal brillant Metal glossy | Métal mat Metal matte |
|---|---|--|---|--|
| 16 Textures 16 Textures | Natural brushed 4041 Brass brushed 4042 Bronze brushed 4045 Inox brossé 4049 Champagne brushed 4051 | Gun metal mill finish 721 Copper mill finish 722 Tin mill finish 723 Black mill finish 724 Tea mill finish 725 | Natural glossy 4070 Brass-tinted glossy 4071 Gun metal glossy 726 | Midnight matte 4061 Sunset matte 4062 Urban matte 4063 Earth matte 4064 Natural matte 4240 |
| Clawed | 3050 x 1270 | - | - | - |
| Dots | 3050 x 1270 | 3050 x 1220 | - | 3050 x 1220 |
| Drapa | 3050 x 1270 | 3050 x 1220 | - | - |
| Fibra | 3050 x 1270 | 3050 x 1220 | - | - |
| Hammered | 3020 x 1230 | 3050 x 1220 | - | - |
| Lines | 3050 x 1270 | 3050 x 1220 | - | 3050 x 1220 |
| Net | 3050 x 1270 | 3050 x 1220 | - | 3050 x 1220 |
| Ribbed | 3050 x 1270 | - | - | - |
| Sablé | 3020 x 1230 | - | - | - |
| Sawn | 3050 x 1270 | - | - | - |
| Skarp | 3050 x 1270 | 3050 x 1220 | - | - |
| Skin (surface lisse) Skin (smooth surface) | 3050 x 1270 | 3050 x 1220 | 2440 x 1220 | - |
| Skin SR (surface lisse) Skin SR (smooth surface) | 3050 x 1270 ⁽¹⁾ | - | - | 3050 x 1220 ⁽²⁾ |
| Sticks | 3050 x 1270 | 3050 x 1220 | - | 3050 x 1220 |
| Stripes | 3050 x 1270 | 3050 x 1220 | - | 3050 x 1220 |
| Tabs | 3050 x 1270 | 3050 x 1220 | - | 3050 x 1220 |
| Till | 3050 x 1270 | 3050 x 1220 | - | - |

1 Sur demande : résistance de surface renforcée 2N (Newton) pour Natural brushed 4041 et Bronze brushed 4045.
On request : reinforced surface resistance 2N (Newton) for Natural brushed 4041 and Bronze brushed 4045 references.

2 Résistance de surface renforcée 3N (Newton)
Reinforced surface resistance 3N (Newton)

Dimensions en millimètres
Dimensions in millimetres

Oberflex
Longeville en Barrois
55014 Bar-Le-Duc Cedex
France
Tél. +33 (0)3 29 76 77 78
www.oberflex.com

